

Hazelwood, MO

637

DUNN RD

For Lease



**LCG**  
Capital Management

**SAVOY**  
PROPERTIES



# 637 DUNN RD

## Details + Demographics

**BEN FRIEDMAN**

314.283.9235 (MOBILE)  
BFriedman@SavoyProperties.com

**JOSH JENKINS**

636.328.4828  
Josh@LCCap.com



**SAVOY**  
PROPERTIES

[www.LCCap.com](http://www.LCCap.com)

The information in this flyer has been obtained from sources believed reliable. While we do not doubt its accuracy, we have not verified it and make no guarantee about it. It is your responsibility to independently confirm its accuracy and completeness. Any projections, opinions, assumptions or estimates used are for example only and do not represent the current or future performance of the property. The value of this transaction to you depends on tax and other factors which should be evaluated by your tax, financial and legal advisors. You and your advisors should conduct a careful, independent investigation of the property to determine to your satisfaction the suitability of the property for your need.



# 637 DUNN RD

## Details + Demographics

**BEN FRIEDMAN**

314.283.9235 (MOBILE)  
BFriedman@SavoyProperties.com

**JOSH JENKINS**

636.328.4828  
Josh@LCCCap.com

- Two available suites:
  - Suite 100: 1,100 SF
  - Suite 103: 2,735 SF (10-year term required)
- Asking Rate: \$19.50 PSF Full Service Gross
- Quality medical building with existing tenant mix:
  - Mercy Hospital
  - SSM Health
  - DaVita
  - Labcorp
  - Esse Health
- Ideal for medical, clinic, lab, or professional office users
- Excellent I-270 and Lindbergh access with strong traffic counts
- Prominent visibility
- Ample on-site parking
- Shared Dock-High Loading
- Immediate availability



## DEMOGRAPHICS

	1 mi	3 mi	5 mi
Population	9,960	65,719	175,996
Median HH Income	\$63,810	\$69,106	\$69,006
Population Median Age	35.9	36.3	36.9
Households	4,313	27,314	71,923



The information in this flyer has been obtained from sources believed reliable. While we do not doubt its accuracy, we have not verified it and make no guarantee about it. It is your responsibility to independently confirm its accuracy and completeness. Any projections, opinions, assumptions or estimates used are for example only and do not represent the current or future performance of the property. The value of this transaction to you depends on tax and other factors which should be evaluated by your tax, financial and legal advisors. You and your advisors should conduct a careful, independent investigation of the property to determine to your satisfaction the suitability of the property for your need.

[www.LCGCap.com](http://www.LCGCap.com)



637 DUNN RD

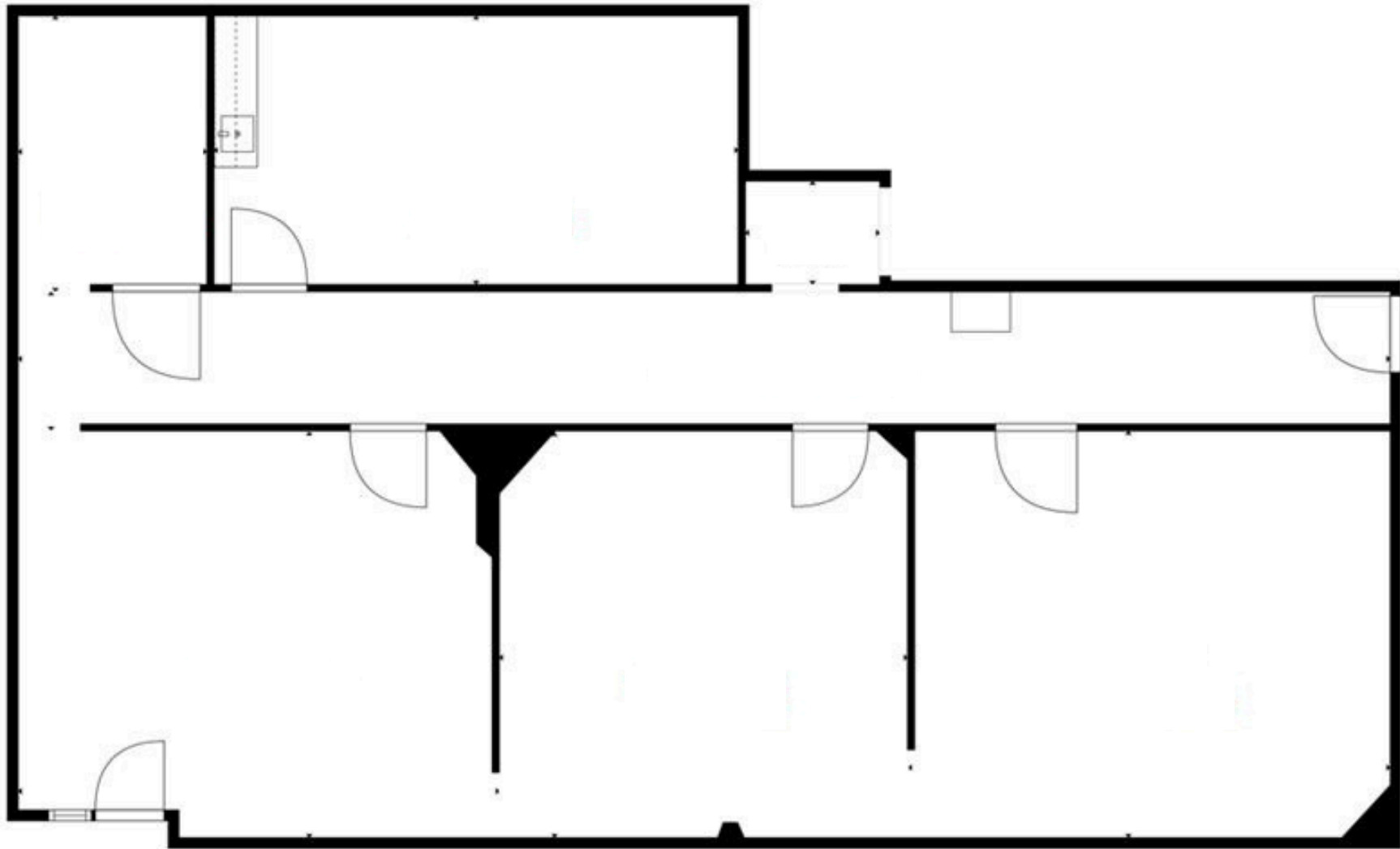
FLOORPLAN - SUITE 103

BEN FRIEDMAN

314.283.9235 (MOBILE)  
BFriedman@SavoyProperties.com

JOSH JENKINS

636.328.4828  
Josh@LCCCap.com





637 DUNN RD

FLOORPLAN-SUITE 100

**BEN FRIEDMAN**

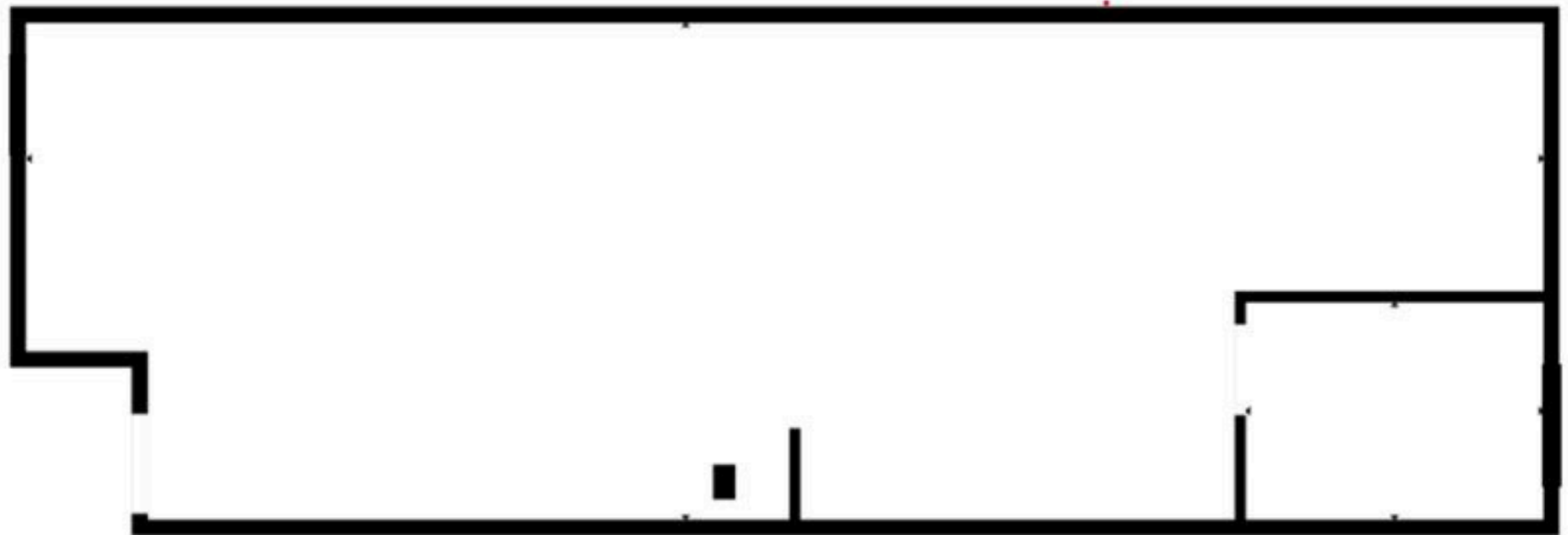
314.283.9235 (MOBILE)

BFriedman@SavoyProperties.com

**JOSH JENKINS**

636.328.4828

Josh@LCGCap.com





# 637 DUNN RD

## AERIAL

**BEN FRIEDMAN**

314.283.9235 (MOBILE)  
BFriedman@SavoyProperties.com

**JOSH JENKINS**

636.328.4828  
Josh@LCGCap.com



**SAVOY**  
PROPERTIES

The information in this flyer has been obtained from sources believed reliable. While we do not doubt its accuracy, we have not verified it and make no guarantee about it. It is your responsibility to independently confirm its accuracy and completeness. Any projections, opinions, assumptions or estimates used are for example only and do not represent the current or future performance of the property. The value of this transaction to you depends on tax and other factors which should be evaluated by your tax, financial and legal advisors. You and your advisors should conduct a careful, independent investigation of the property to determine to your satisfaction the suitability of the property for your need

[www.LCGCap.com](http://www.LCGCap.com)