

425 N NEW BALLAS RD
CREVE COEUR, MISSOURI

FOR LEASE

425

SAVOY
PROPERTIES

LLCG
Capital Management



425 N New Ballas Rd

PHOTOS + DETAILS

EMILY ACKLEY

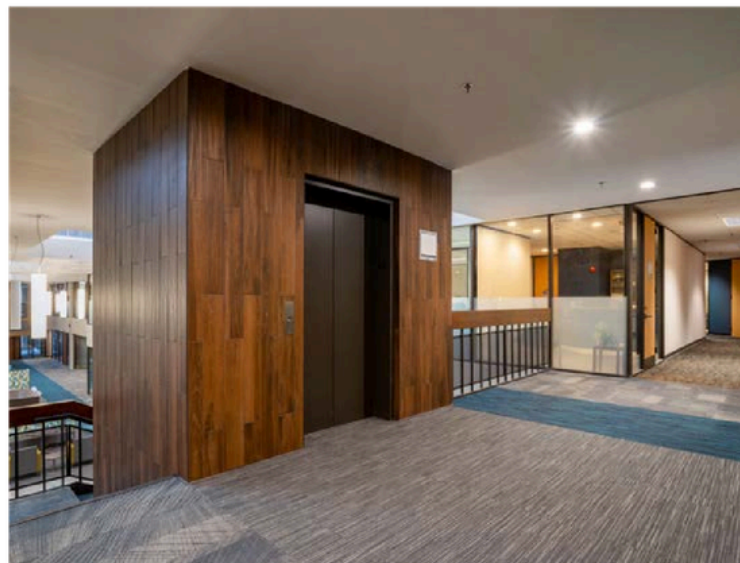
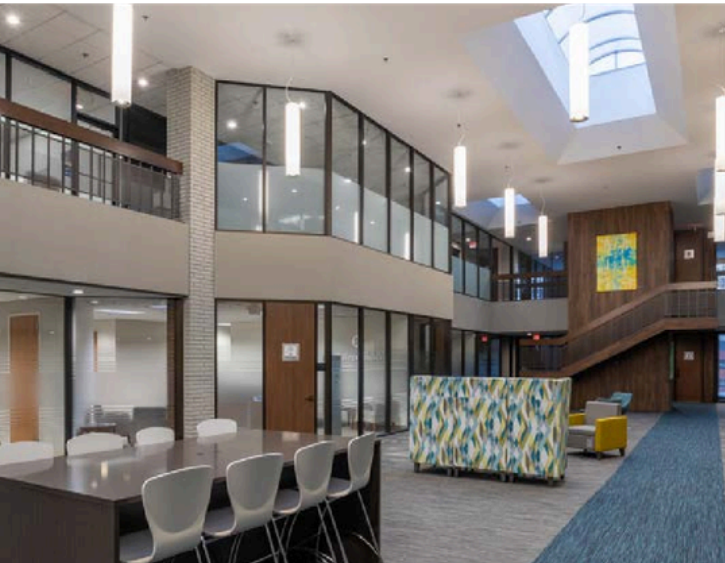
816.560.6386
Emily@LCGCap.com

NICK HARTIG

314.805.9779
Nick@LCGCap.com

BEN FRIEDMAN

314.283.9235
bfriedman@savoyproperties.com



- Medical & General Office Space
For Lease: \$24.00–\$27.00 PSF Full Service
- Up to 4,910 SF available
- Full interior and exterior renovation completed, creating a Class A office environment
- Large shared atrium ideal for meetings, collaboration, and tenant events
- Ample surface parking with a 4:1,000 SF parking ratio
- Convenient access to I-270 and Olive Boulevard
- Strategically located within 3 miles of three major medical campuses:
- Mercy Hospital, Missouri Baptist Medical Center, and Barnes-Jewish West County Hospital

Available Suites:

- Suite 103: 4,910 SF
- Suite 207: 1,061 SF
- Suite 220: 2,644 SF
- Suite 295: 1,000 – 3,859 SF



425 N New Ballas Rd

FLOORPLAN - LEVEL 1

EMILY ACKLEY

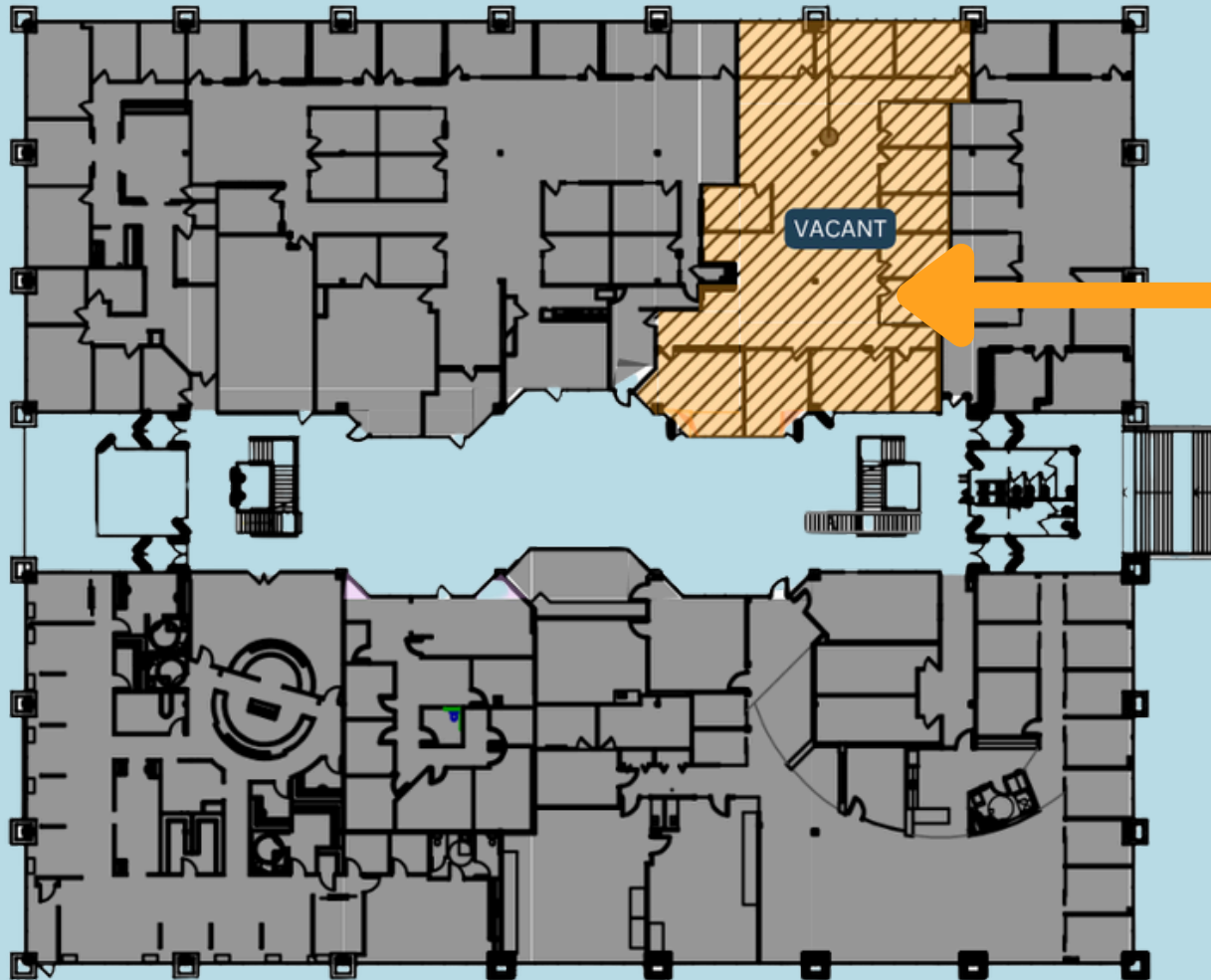
816.560.6386
Emily@LCGCap.com

NICK HARTIG

314.805.9779
Nick@LCGCap.com

BEN FRIEDMAN

314.283.9235
bfriedman@savoyproperties.com



Suite 103 - 4,910 SF

425 N New Ballas Rd

FLOORPLAN - LEVEL 2

EMILY ACKLEY

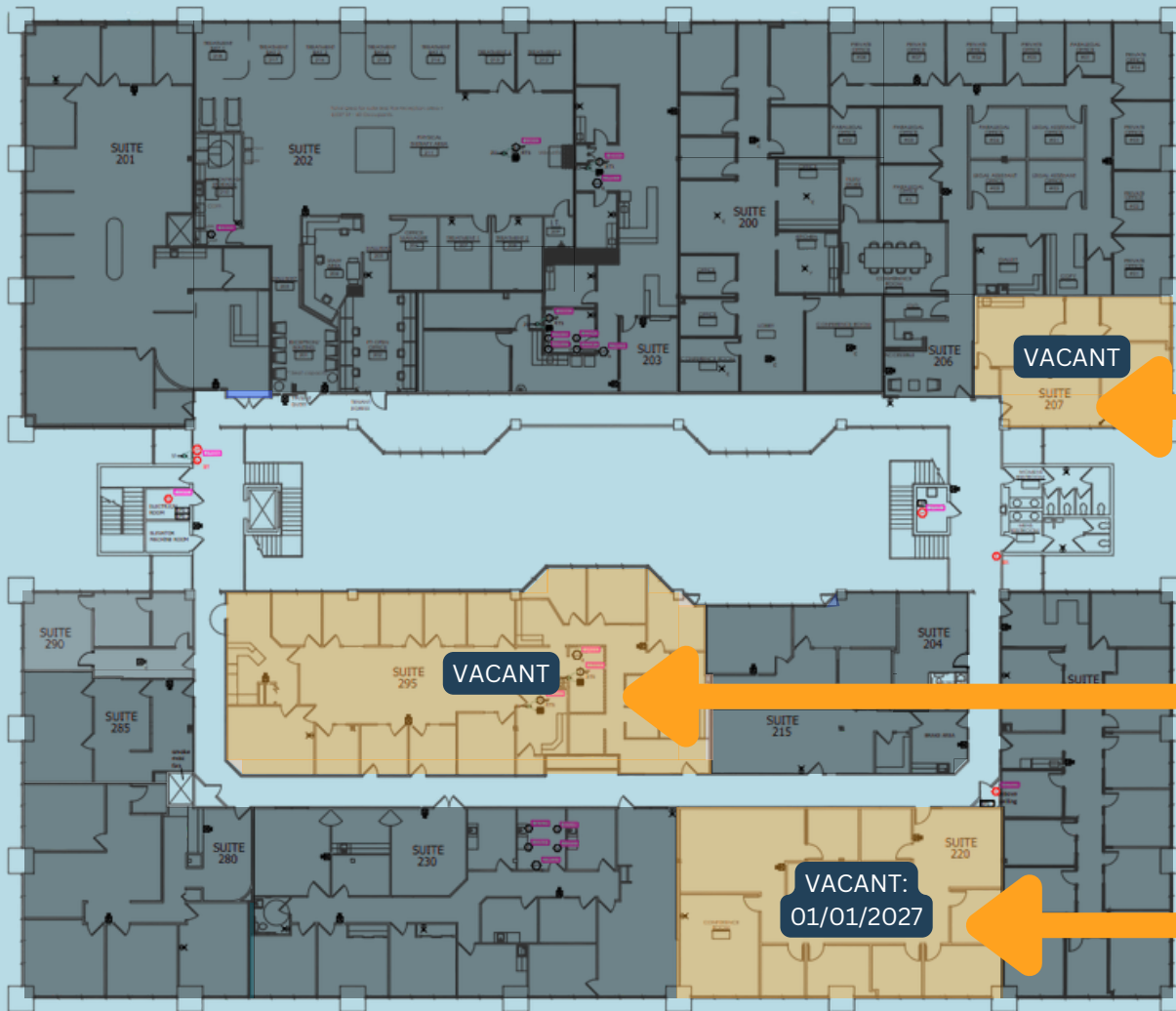
816.560.6386
Emily@LCGCap.com

NICK HARTIG

314.805.9779
Nick@LCGCap.com

BEN FRIEDMAN

314.283.9235
bfriedman@savoyproperties.com



Suite 207 - 1,061 SF

Suite 295 - 3,859 SF

Suite 220 - 2,644 SF

*available 1/01/2027



425 N New Ballas Rd

AERIAL

EMILY ACKLEY

816.560.6386
Emily@LCGCap.com

NICK HARTIG

314.805.9779
Nick@LCGCap.com

BEN FRIEDMAN

314.283.9235
bfriedman@savoyproperties.com

